

## Flyin Optical Patch Cord

Flyin's optical fiber patchcord( fiber jumper)with ISO9001 and 14001 certification ,ROHS. sometimes called a fiber optic patch cord is a length of fiber cabling fitted with LC, SC, FC,MTRJ or ST fiber connectors at each end.The LC, a smaller form factor fiber optic connector, is most commonly used. Fiber jumpers also come in hybrid varieties with one type of connector on one end and another type of connector on the other. Jumpers are used in the same manner as patch cords, to connect end devices or network hardware to the structured cabling system.

### Features

- High dense spaces
- Ceramic ferrules connectors
- Half the size of standard connector
- Low insertion loss,high return loss
- Excellent mechanical endurance
- High credibility and stability
- Good in repeatability and exchangeability
- 100% Insertion,Return Loss, End face and Interference inspection



### Applications

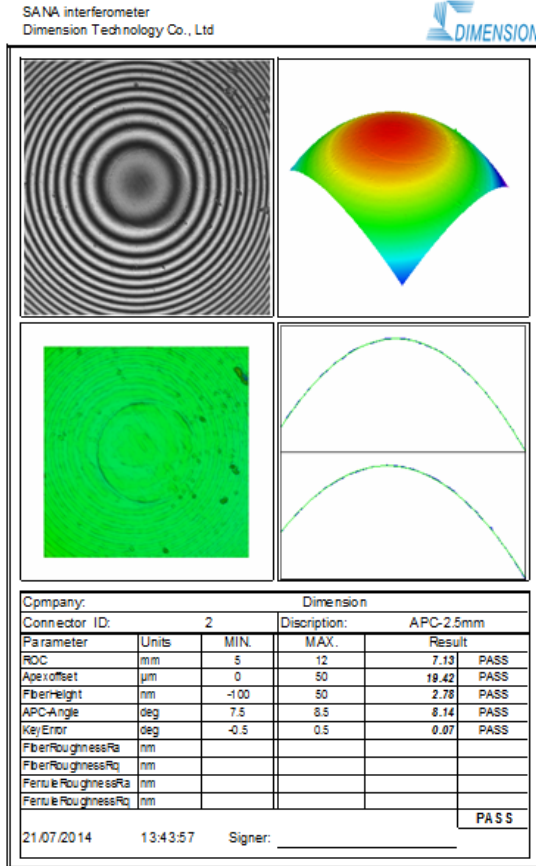
- Telecommunication
- CATV,FTTH,LAN
- Fiber optic sensors
- Optical transmission system
- Test equipment

### Performance Specifications

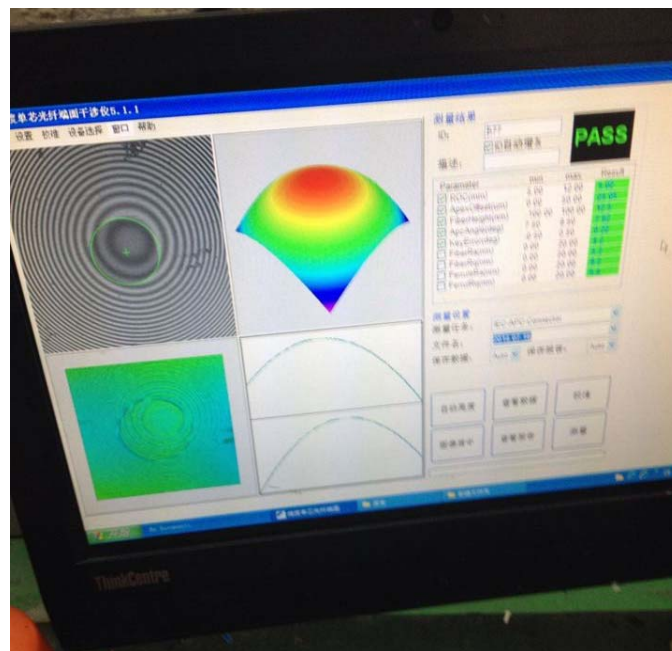
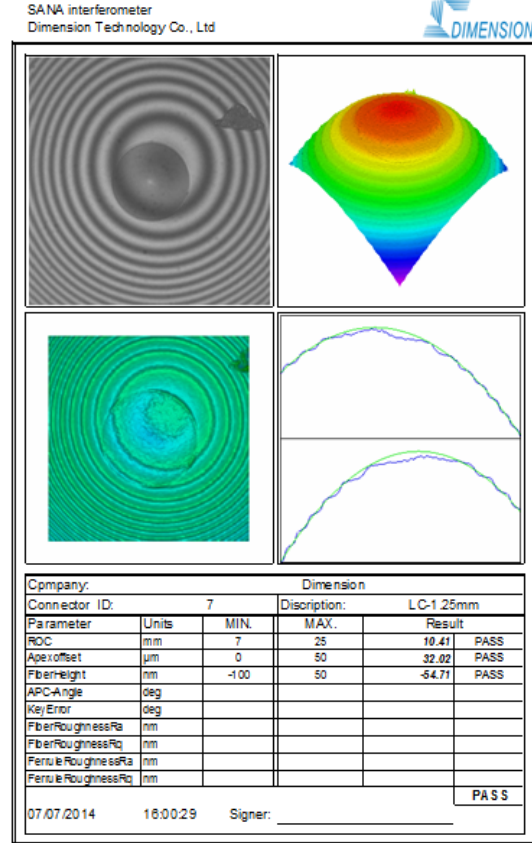
Parameter	Unit	FC,SC,LC			ST,MU		MTRJ	
		SM		MM	SM	MM	SM	MM
		UPC	APC	UPC	UPC	UPC	UPC	UPC
Operating Wavelength	nm	1310,1550		850, 1300	1310,1550	850,1300	1310,1550	850,1300
Insertion Loss	dB	≤0.2dB	≤0.3dB	≤0.2dB	≤0.2dB	≤0.2dB	≤0.2dB	≤0.2dB
Return Loss	dB	≥50dB	≥60dB	≥35dB	≥50dB	≥35dB	≥50dB	≥35dB
Repeatability	dB	≤0.1						
Interchangeability	dB	≤0.2						
Plug times	times	≥1000						
Tensile Strength	N	≥100						
Durability	dB	≤0.2						
Operating temperature	℃	-45℃ ~ +75℃						
Storage temperature	℃	-45℃ ~ +85℃						

### 3D Interference Test

#### TEST REPORT



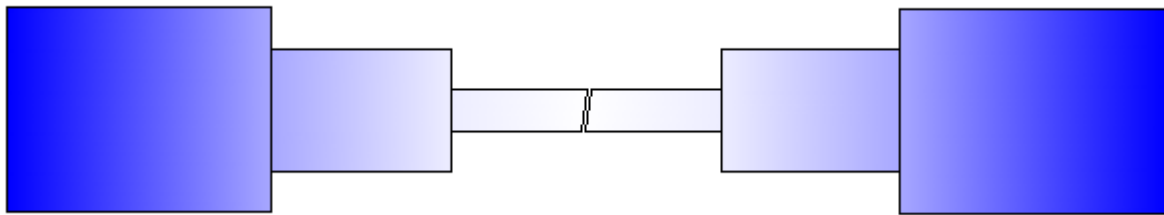
#### TEST REPORT



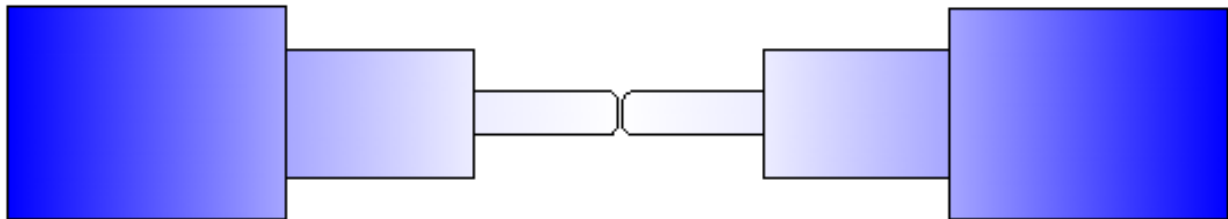
### APC and UPC Endface

Mode number	Single-Mode	Multi-mode
Length	(10.50±0.05) mm	(10.50±0.01) mm
Outer-diameter	(2.4990±0.0005)mm	(2.4990±0.001) mm
Inner-diameter	(0.125+0.001/-0)mm	(0.126~0.129)mm
Concentricity	≤1.0	≤4.0

**APC---** Angled Physical Contact, endface is curved, with 8 degree



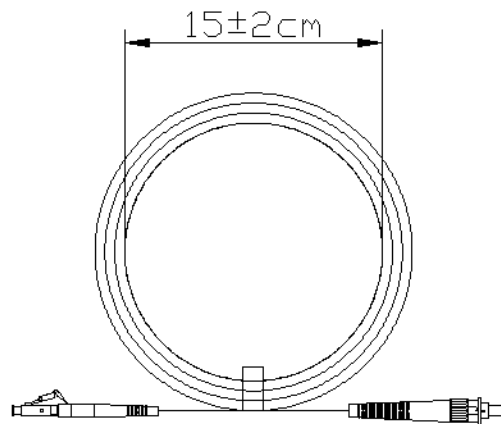
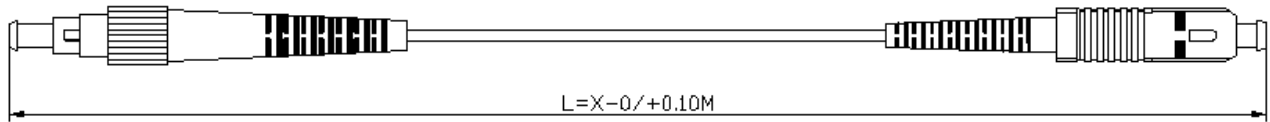
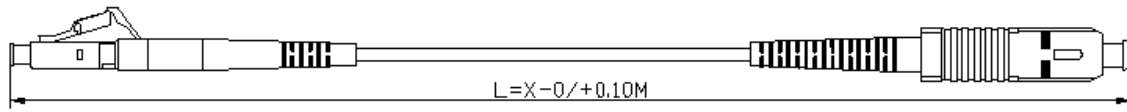
**UPC--** Ultra Physical Contact with an extended polishing for a better surface finish



**Connectors&Kits ( customer-designed color for boots and dust caps)**



Remark: 1. Housing material—PBT,TPE,TT,Metal material  
2. Housing color—Blue(SM/UPC),Green(SM/APC),Beige(MM),Aqua



### Ordering Information

□ TO □	□	□	□	□	□
Connector Type	Polishment	Fiber Type	Cable Length	Cable type	Cable Jacket
1=FC 2=SC 3=LC 4=ST 5=MU 6=MTRJ S=Special	1=UPC 2=APC 8 degree	1=SM 9/125 G652D 2=SM 9/125 G657A 3= MM 50/125 (OM2) 4=MM 50/125 (OM3) 5=MM 50/125 (OM4) 6=MM 62.5/125 (OM1)	0=0.5m 1=1.0m 2=2.0m 3=3.0m S=Special	1=Simplex 2=Duplex 3= Water-proof 4=Break-out 5= Ribbon 6=Bundle	1=LSZH 2=PVC 3=OFNR S=special